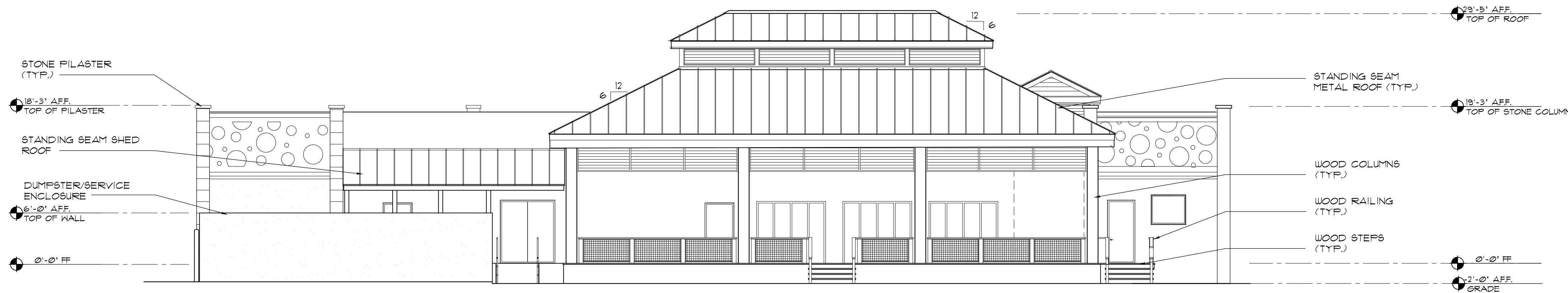
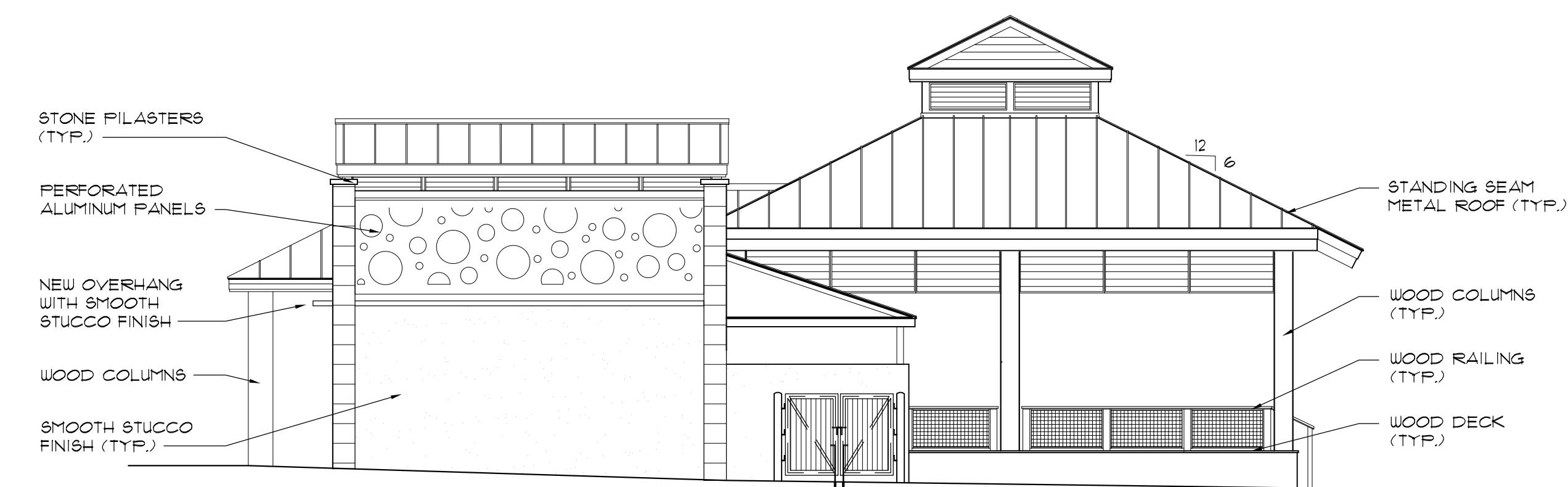


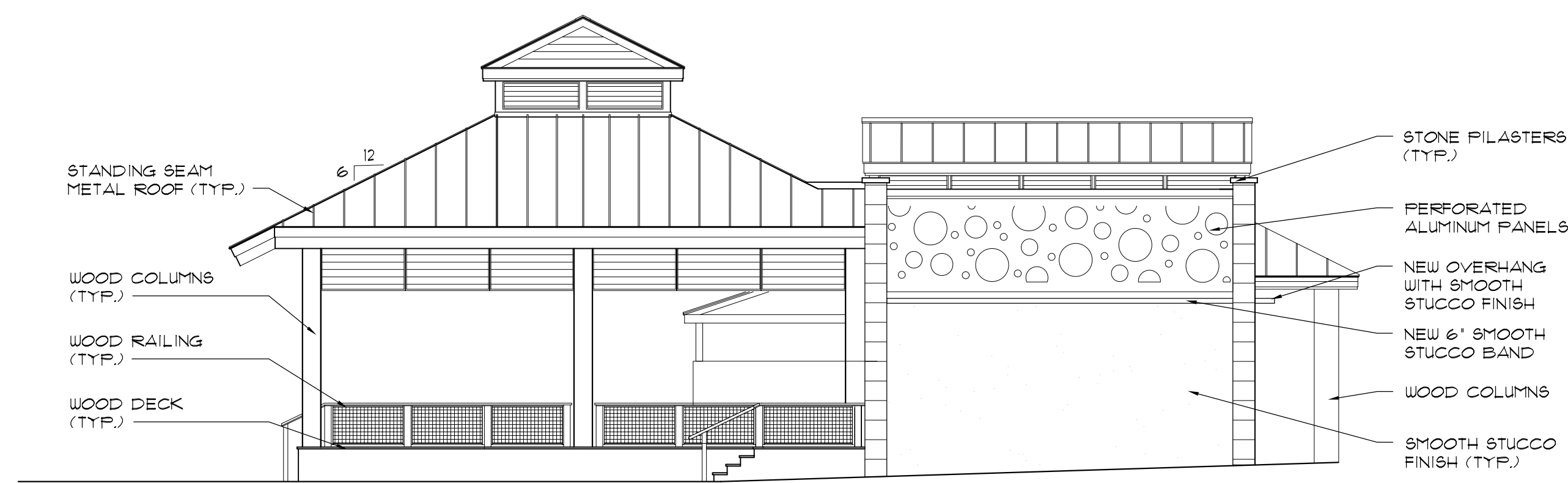
01 EAST ELEVATION  
SCALE: 1/8" = 1'-0"



02 WEST ELEVATION  
SCALE: 1/8" = 1'-0"



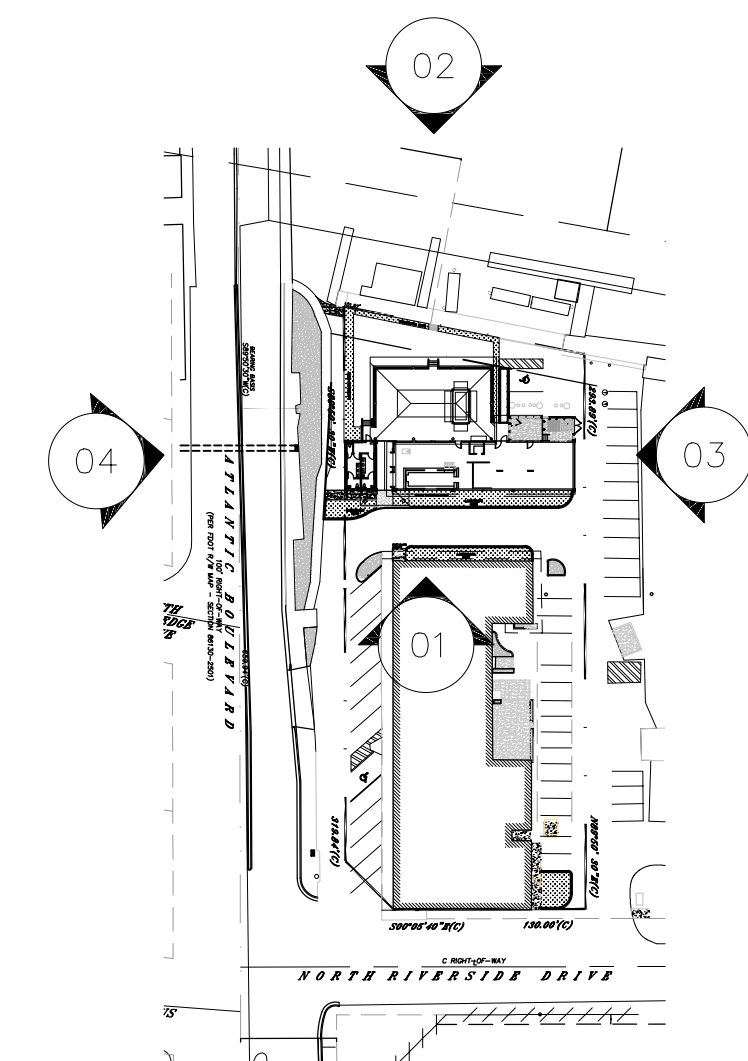
03 NORTH ELEVATION  
SCALE: 1/8" = 1'-0"



04 SOUTH ELEVATION  
SCALE: 1/8" = 1'-0"

### EXTERIOR FINISH LEGEND

ITEM	DESCRIPTION	MANUFACTURER	MODEL / COLOR	GENERAL NOTES
FLAT ROOF COVERING	MODIFIED BITUMEN ROOF SURFACE	T.B.D.	T.B.D.	1. ALL FINAL FINISH COLORS AND FINISHES TO BE SELECTED BY ARCHITECT AND APPROVED BY OWNER. 2. PROPOSED FINISHES ARE INTENDED TO BE LOW MAINTENANCE AND COMMERCIAL GRADE. 3. ALL EXTERIOR OPENING PROTECTIVES TO MEET APPLICABLE CODE REQUIREMENTS FOR HURRICANE IMPACT RESISTANCE. 4. ALL EXTERIOR MOUNTED SYSTEMS, SIGNAGE, ACCENTS, ETC. ARE TO BE DESIGNED TO MEET APPLICABLE EXTERIOR LOADING REQUIREMENTS.
PITCHED ROOF COVERING	STANDING SEAM	T.B.D.	CLEAR ANODIZED ALUMINUM FINISH	
FLASHING, GUTTERS AND DOWNSPOUTS	METAL ROOF ACCESSORIES AND FLASHING	T.B.D.	CLEAR ANODIZED ALUMINUM FINISH	
EXTERIOR STUCCO - FIELD	STUCCO - SAND SMOOTH FINISH	T.B.D.	T.B.D.	
EXTERIOR STUCCO - ACCENT 1	STUCCO - SAND SMOOTH FINISH	T.B.D.	T.B.D.	
STOREFRONT WINDOW/DOOR/LOUVER: FRAME	ALUMINUM - HURRICANE IMPACT RESISTANT - OVERHEAD AND FOLDING DOORS	T.B.D.	T.B.D.	
WINDOW/DOOR: GLAZING	INSULATED GLASS - BLAST IMPACT RESISTANT	T.B.D.	LIGHT GREEN GLASS WITH LOW E COATING	



KEY PLAN  
SCALE: 1" = 100'-0"

PZ20-12000051  
3/17/21

PH: (954) 941-3329  
FAX: (954) 943-7708  
design kollaborative  
architects / planners, inc.  
MEMBER: AMERICAN INSTITUTE OF ARCHITECTS - AA 000954  
61 NE 1ST STREET, SUITE 2, POMPANO BEACH, FL 33060

Blaise E. McGinley  
2021.01.27.09:  
19:55-05'00"  
BLAISE MCGINLEY  
ARCHITECT ASSOCIAT

NEW RESTAURANT  
TAHA MARINE CENTER  
3109-3231 E ATLANTIC BLVD  
POMPANO BEACH, FL 33062

DATE  
04/09/2020  
PERMIT  
CONSTR  
00/00/00  
00/00/00  
PROJECT NO.  
20006  
BY REVISIONS DATE